



THE HILLS CLUBHOUSE, ARROWTOWN

PATTERSON ASSOCIATES

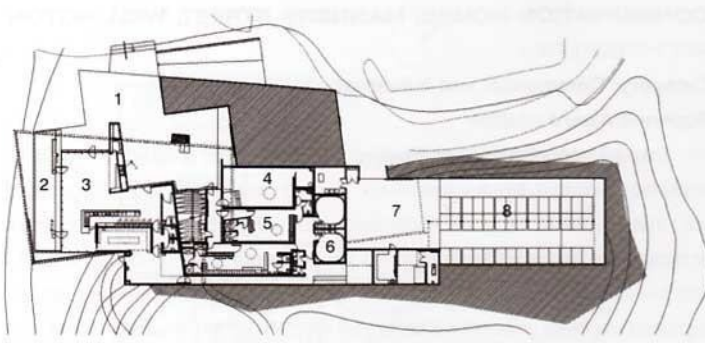
Category: Hospitality and Tourism

Supreme Award citation

The pavilion perfectly houses the clubhouse program involving back of house support, entertainment and observation, and makes a splendid divot-like sculpture just off the eighteenth green. The expressive use of structural engineering and reflective interiors makes a memorable entry to the course and a triumphant nineteenth hole.



Photographer: Simon Dewitt



FLOOR PLAN

- 01 Courtyard
- 02 Deck
- 03 Bar
- 04 Gym
- 05 Changing room
- 06 Colour therapy spa
- 07 Service courtyard
- 08 Cart store

New Zealand Award citation

A wonderfully sophisticated bunker that incorporates a flexible functional brief, sensitive siting, and plenty of drama. Outstanding in concept and execution, with careful and consistent detailing, finishing, and furnishing. The articulation of precast concrete slabs, GRC panels, cast insitu elements and polished concrete floors is consummate and evidences a new level of confidence in concrete construction, perhaps not seen since the Brutalist work carried out in Christchurch in the 1960s. The plan and details generated by a simple 'slipping' of a rectilinear form are at once incredibly simple yet highly dynamic.